



KINETIC SCIENTIFIC

High Performance Solutions for High Performance Sailing

Offshore Membrane Button Panels

Kinetic Scientific

High Performance Solutions for High Performance Sailing

Kinetic custom membrane button panels are available in a wide variety of button and LED configurations limited only by your imagination.

Features

- Bold colors & fiber optic backlight for excellent visibility in all conditions
- Embossed membrane element helps locate buttons without looking
- Stainless steel domes provide positive tactile feedback
- Low power single or dual color backlighting
- Large pallet of Pantone colors for background, text and graphics
- Wide variety of LED indicator and backlight colors
- Full custom graphic options for membranes, bezels and UV covers
- Identical in size to B&G 2020 displays to provide a simple, clean, consistent look at the helm, around the deck and below
- IP67 environmental protection for extreme reliability and durability
- Simplified installation with 80mm (3¼") round penetration

Cost and lead times are dependent on a number of factors and require preliminary design consultation to provide an exact quote. For budgetary purposes, allow US\$3500 per panel including four-color translucent printing, backlighting, bezel, cover and 2.0 meter flying lead. Delivery varies from 8-16 weeks depending on design details, quantity, etc.

Kinetic Scientific

High Performance Solutions for High Performance Sailing

Sample Layout 1



Kinetic Scientific

High Performance Solutions for High Performance Sailing

Sample Layout 2



Kinetic Scientific

High Performance Solutions for High Performance Sailing

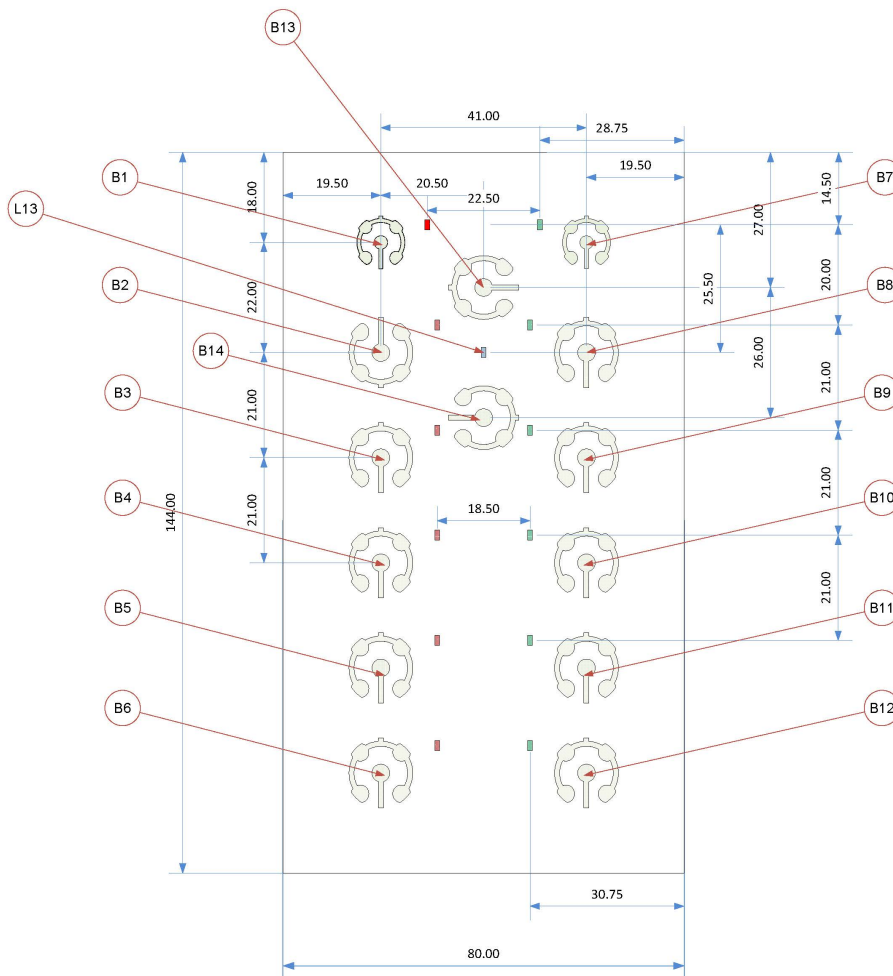
Sample Layout 3



Kinetic Scientific

High Performance Solutions for High Performance Sailing

Membrane Planning Template



Kinetic Scientific

High Performance Solutions for High Performance Sailing

Specification

Membrane Specification	
Graphic Overlay	Multi-color Pantone text and graphics
	Translucent printing for backlit readability
Switch Ergonomics	Embossing shapes surrounding buttons
	Stainless steel tactile domes - round or triangular
Backlight Element	Fiber Optic Element for smooth, even effects
	Single or Dual color
	Low power, dimmable
Electrical Specifications	
LEDs	Ultra thin LEDs in Red, Green, Blue, Yellow
	Optional matched series resistors for 3-24 VDC operation
	Common anode or common cathode
Switches	SPST momentary push buttons to common rail
	50mA maximum current
Physical Specifications	
Dimensions	178.6 x 114.8 x 13.8mm
Penetration	80 Ø x 16mm plus cable
Material	ABS
Cable	Shielded, tinned, stranded 24AWG copper
	Standard length - 2m
Weight	500g
Mounting	4x 3mm screws
Environmental Specification	
Assembly	Sealed to IP67
Installation Interface	Neoprene gasket